

Welcome Aboard!

The Aurora Explorer is a 135-foot landing craft. It operates from a base at Menzies Bay (15 km north of Campbell River, BC), transporting a wide variety of heavy equipment and general freight throughout the Gulf of Georgia and the remote inlets of Johnstone-Queen Charlotte Straits.



The vessel offers a dining lounge, lower deck lounge and bridge deck lounge for passenger comfort and viewing. There is a nautical and history library of coastal BC on board. There are also outside observation decks where passengers can observe activity on the freight deck, enjoy the passing scenery or simply lie back and soak up the sunshine and salt air.

The Aurora Explorer is Transport Canada Ship Safety approved and carries the full range of safety equipment as directed by the Canadian Coast Guard.

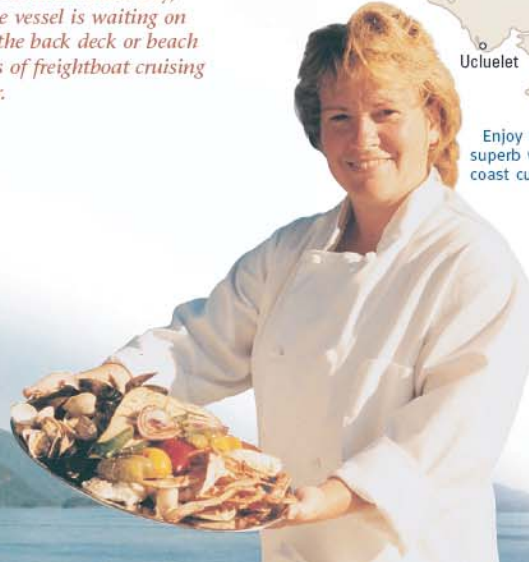
You'll discover majestic scenery and wildlife around every bend.

Passenger accommodations are premium staterooms with twin beds and forward viewing windows, or standard staterooms equipped with bunkbeds. There are six shared washrooms, three shower rooms and adjacent washer/dryer. Passenger accommodation is offered on regular freight voyages to a variety of coastal locations. Trip packages are five days in duration.



Premium stateroom

Passengers enjoy observing the ship at work, but there's also time for play. Going ashore for a picnic or exploring tidepools in a hidden bay, throwing in a line when the vessel is waiting on the tide and barbeques on the back deck or beach are all part of the pleasures of freightboat cruising on the MV Aurora Explorer.



Enjoy our superb west coast cuisine



Experience the sights and sounds of logging camps, fish farms, remote coastal communities and homesteads. Journey into the hinterland of coastal BC and meet its people.

CRUISE OPTIONS

PRINCIPAL CRUISE AREAS IN BOLD

RED
Broughton Archipelago
Kingcome/Knight Inlets region. On occasion, extensions to Seymour Inlet.

PURPLE
Discovery Islands
Bute/Toba/Loughborough Inlets, Desolation Sound region.

MYSTERY CRUISE
Anywhere within the Red and Purple boundaries.



Fishing off the stern

Cruise Routing – M.V. AURORA EXPLORER

Discovery Islands

The *Aurora Explorer* departs Menzies Bay and typically cruises northward through Seymour Narrows. Passing over the infamous "Ripple Rock", she works her way up Discovery Passage into the maze of islands and mainland inlets, with possible stops in Loughborough Inlet, Cordero Channel, Blind Channel, Phillips Arm, Sonora Island and Stuart Island. The *Aurora Explorer* may then cruise up spectacularly scenic Bute Inlet with stops along the way, possibly reaching the head of the inlet, where the Homathko River and the Southgate River both empty into opposite sides of Waddington Harbour. The upper reaches of the inlet provide a vista of steep granite bluffs, numerous hanging valleys, cascading waterfalls, glimpses of the Homathko Ice field near Mt. Grenville (3109 m) and other glaciers in the surrounding mountain ranges. When the salmon are running the *Aurora Explorer* often stops at world famous Orford River to view the Grizzly Bears feeding at the mouth of the river. Freight deliveries usually take us into Toba Inlet and the Desolation Sound area, often providing us with opportunities to explore Teakerne Arm, Mittenatch Island, Savary Island, Copeland Islands, Mansons Landing, Spilsbury Point on Hernando Island, and other places of coastal interest before returning home to Campbell River via Cape Mudge on the Southern tip of Quadra Island.

Broughton Archipelago

After departing Menzies Bay, the *Aurora Explorer* makes her way north through Seymour Narrows, Discovery Passage and Johnstone Strait calling at isolated villages and camps along the way. Passengers enjoy spectacular scenery and unparalleled wildlife viewing that often includes porpoises, whales, seals, sea lions and eagles. This route takes us through Chatham Channel, past Minstrel Island, and into the endless maze of channels and islands that form the Broughton Archipelago. With freight opportunities dictating our actual "ports of call", the *Aurora Explorer* often travels deep into the coastal fjords, branching off from the Broughton Archipelago into Knight Inlet, Kingcome Inlet, Wakeman Sound, Mackenzie Sound and Drury Inlet to complete her freight deliveries. Knight Inlet, the longest and most spectacular of all of our coastal fjords, represents all that is majestic about coastal British Columbia. Whenever freight volumes allow, traveling past Cascade Head (where a waterfall plunges over 800 feet directly into the ocean), passengers are given the opportunity to view towering granite cliffs rising directly from the shore into magnificent hanging valleys with 4000 metre peaks forming a snowcapped backdrop. With patience and keen observation, mountain goats may be seen on the granite ledges, and grizzly bears and black bears can be seen feeding on spawning salmon at the numerous river deltas. Occasionally, the *Aurora Explorer* has the good fortune to visit the more distant and isolated Seymour Inlet system. This routing takes the *Aurora Explorer* through the narrow confines of Schooner Channel that lead to Slingsby Channel, Nakwakto Rapids and the legendary "Tremble Island". Returning home, the *Aurora Explorer* makes every effort to stop near the historical first nations villages of Mamalilaculla and Karlukwees. Near the end of our adventure, the *Aurora Explorer* is known to be a regular visitor at Yorke Island, the sobering historical military site that housed WW II artillery defenses.

Mystery Cruise

These special cruises of the *Aurora Explorer* are for those with adventurous spirits, because we really cannot predict where the vessel will actually go. The ship will travel where the freight takes her, which will provide passengers the opportunity to view a wider selection of the coast.

MV Aurora Explorer Marine Link Tours

Please Note:

Passengers are reminded that the *Aurora Explorer* is an actual working freight boat. Delivery of freight and the securing of additional freight opportunities will dictate the routing and the timetable of the vessel. While every effort is made to provide time in the schedule for our guests to disembark from the vessel for sightseeing, exploring or other recreational activities, such stops are not guaranteed. Actual cruise routing as described above may vary depending on freight opportunities, weather conditions and tidal restraints. Conditions of Carriage apply. Please refer to the reverse side of the cruise application form that will be mailed to persons making a booking.

Annual Weather and Conditions

March, April and May - cooler weather but the waterfalls and snow-caps are spectacular. Less fog and few bugs.

June - usually warmer; can be wet and foggy. Better weather for exploring and getting out and about with the longer days of sunlight.

July and August - lounge out on deck and soak up the sunshine, however there may be fog at times. Best months for spotting whales and porpoises.

September - usually reasonably warm, may be some fog; harvest moons at the head of inlets may be spectacular. Best month for viewing bears.

October - cooler; waterfalls and snow-caps return, mists and colours of autumn provide contrasting west coast vistas.

Celebrate with friends – Share a cruise with a special person or group of friends. We will help to make it a memorable occasion. Marine Link Tours can supply gift certificates to put under the tree at Christmas or for a special occasion.

Whole vessel charter – We offer a 10% discount if you book the whole vessel (6 fully paid staterooms). We generally have a no-children policy (16 years or older) as we consider the Aurora Explorer more suited to the adult voyager. However, on whole vessel bookings, accompanying children are welcome (12 passengers maximum).

Large group bookings – We offer a 5% discount if you book a large group (4 fully paid staterooms).

Mystery cruise – cast off...destination unknown! These cruises are our most unique cruise option. We will go where the freight takes us, with lots of time for passenger friendly experiences, lots of good food and our same excellent crew.

If you know someone who might like to join one of our cruises, let us know and we can send them more information.

MARINE LINK TOURS

Explore the working Coast

TERMS & CONDITIONS

Cruise Routing

Passengers embarking on an *Aurora Explorer* cruise are reminded that the vessel is a working freight boat. Delivery of freight and the securing of additional freight opportunities will dictate the routing and the timetable of the vessel. Consequently, routing may differ from that described in "Cruise Routing" above. While every effort is made to provide time in the schedule for our guests to disembark from the vessel for sightseeing, exploring or other recreational activities, such stops are not guaranteed. The actual routing of the vessel may vary from that advertised depending on time allowances and freight opportunity.

Rates: In Canadian Dollars are per person, based on double occupancy + 5% Goods & Services Tax and include:

All meals, wine with dinner, non-alcoholic beverages and snacks.

Single occupancy is available on a limited basis at an **additional charge of 70%** of the double occupancy rate

Deposit (Non-Refundable) 25% deposit is due upon booking. The balance is due no later than 60 days prior to sailing date

Standard Stateroom – bunk beds, rear and side viewing windows, smaller stateroom

Premium Stateroom – twin beds, forward viewing windows, larger stateroom

Please Note:

Passengers must be **16 years or older**. Interior of vessel is **non-smoking**. **Sorry**, we are unable to accommodate pets.

All *Aurora Explorer* cruises begin and end at the Menzies Bay Terminal, 15 kms north of Campbell River, BC.

Secure, free parking is available on site.

Short Notice Savings

Please inquire about our standby waiting list. In some circumstances, special discounts of up to 25% off regular fares may apply for short-notice, standby passengers.

Whole Vessel or Large Group Booking discounts - Please inquire.

Refund Policy

We remind you that our cancellation policy does not provide for refund of your deposit.

Upon receipt of your full fare at least 60 days prior to your cruise the refund schedule is as follows:

75% refund is provided if cancellation occurs 60 days or more prior to sailing

50% refund is provided if cancellation occurs 45 to 59 days prior to sailing

25% refund is provided if cancellation occurs 30 to 44 days prior to sailing

No refund is provided if cancellation occurs with less than 30 days notice

M.V. AURORA EXPLORER

2010 SAILING SCHEDULE

(Revised June 4, 2009)

Departures each Tuesday, 3 day/night or 5 day/night sailings as indicated below

SPRING EARLY BIRD SEASON			
Trip #	Departs / Returns	*Cruise Routing	Duration
1	Mar 30 to Apr 2	Mystery	3 Days / 3 Nights
2	Apr 6 to Apr 11	Broughton Archipelago *Kingcome Inlet, Knight Inlet, Blackfish Sound, Johnstone Strait	5 Days / 5 Nights
SPRING SHOULDER SEASON			
Trip #	Departs / Returns	*Cruise Routing	Duration
3	Apr 13 to Apr 18	Discovery Islands *Bute, Toba, Loughborough Inlets, Stuart Island, Desolation Sound	5 Days / 5 Nights
4	Apr 20 to Apr 25	Broughton Archipelago *Kingcome Inlet, Knight Inlet, Blackfish Sound, Johnstone Strait	5 Days / 5 Nights
5	Apr 27 to Apr 30	Mystery	3 Days / 3 Nights
6	May 4 to May 9	Broughton Archipelago *Kingcome Inlet, Knight Inlet, Blackfish Sound, Johnstone Strait	5 Days / 5 Nights
7	May 11 to May 16	Discovery Islands *Bute, Toba, Loughborough Inlets, Stuart Island, Desolation Sound	5 Days / 5 Nights
8	May 18 to May 23	Broughton Archipelago *Kingcome Inlet, Knight Inlet, Blackfish Sound, Johnstone Strait	5 Days / 5 Nights
HIGH SEASON			
Trip #	Departs / Returns	*Cruise Routing	Duration
9	May 25 to May 28	Mystery	3 Days / 3 Nights
10	Jun 1 to Jun 6	Broughton Archipelago *Kingcome Inlet, Knight Inlet, Blackfish Sound, Johnstone Strait	5 Days / 5 Nights
11	Jun 8 to Jun 13	Discovery Islands *Bute, Toba, Loughborough Inlets, Stuart Island, Desolation Sound	5 Days / 5 Nights
12	Jun 15 to Jun 20	Broughton Archipelago *Kingcome Inlet, Knight Inlet, Blackfish Sound, Johnstone Strait	5 Days / 5 Nights
13	Jun 22 to Jun 25	Mystery	3 Days / 3 Nights
14	Jun 29 to Jul 4	Broughton Archipelago *Kingcome Inlet, Knight Inlet, Blackfish Sound, Johnstone Strait	5 Days / 5 Nights
15	Jul 6 – Jul 11	Discovery Islands *Bute, Toba, Loughborough Inlets, Stuart Island, Desolation Sound	5 Days / 5 Nights
16	Jul 13 to Jul 18	Broughton Archipelago *Kingcome Inlet, Knight Inlet, Blackfish Sound, Johnstone Strait	5 Days / 5 Nights
17	Jul 20 to Jul 23	Mystery	3 Days / 3 Nights
18	Jul 27 to Aug 1	Broughton Archipelago *Kingcome Inlet, Knight Inlet, Blackfish Sound, Johnstone Strait	5 Days / 5 Nights
19	Aug 3 to Aug 8	Discovery Islands *Bute, Toba, Loughborough Inlets, Stuart Island, Desolation Sound	5 Days / 5 Nights
20	Aug 10 to Aug 15	Broughton Archipelago *Kingcome Inlet, Knight Inlet, Blackfish Sound, Johnstone Strait	5 Days / 5 Nights
21	Aug 17 to Aug 20	Mystery	3 Days / 3 Nights

Please see next page

HIGH SEASON - CONTINUED

Trip #	Departs / Returns	*Cruise Routing	Duration
22	Aug 24 to Aug 29	Broughton Archipelago *Kingcome Inlet, Knight Inlet, Blackfish Sound, Johnstone Strait	5 Days / 5 Nights
23	Aug 31 to Sep 5	Discovery Islands *Bute, Toba, Loughborough Inlets, Stuart Island, Desolation Sound	5 Days / 5 Nights
24	Sep 7 to Sep 12	Broughton Archipelago *Kingcome Inlet, Knight Inlet, Blackfish Sound, Johnstone Strait	5 Days / 5 Nights

FALL SHOULDER SEASON

Trip #	Departs / Returns	*Cruise Routing	Duration
25	Sep 14 to Sep 17	Mystery	3 Days / 3 Nights
26	Sep 21 to Sep 26	Broughton Archipelago *Kingcome Inlet, Knight Inlet, Blackfish Sound, Johnstone Strait	5 Days / 5 Nights
27	Sep 28 to Oct 3	Discovery Islands *Bute, Toba, Loughborough Inlets, Stuart Island, Desolation Sound	5 Days / 5 Nights
28	Oct 5 to Oct 10	Broughton Archipelago *Kingcome Inlet, Knight Inlet, Blackfish Sound, Johnstone Strait	5 Days / 5 Nights
29	Oct 12 to Oct 15	Mystery	3 Days / 3 Nights

FALL LATE SEASON

Trip #	Departs / Returns	*Cruise Routing	Duration
30	Oct 19 to Oct 24	Broughton Archipelago *Kingcome Inlet, Knight Inlet, Blackfish Sound, Johnstone Strait	5 Days / 5 Nights
31	Oct 26 to Oct 31	Discovery Islands *Bute, Toba, Loughborough Inlets, Stuart Island, Desolation Sound	5 Days / 5 Nights

* Cruise Routing

Passengers embarking on an *Aurora Explorer* cruise are reminded that the vessel is a working freight boat. Delivery of freight and the securing of additional freight opportunities will dictate the routing and the timetable of the vessel. Consequently, routing may differ from that described in "Cruise Routing" above. While every effort is made to provide time in the schedule for our guests to disembark from the vessel for sightseeing, exploring or other recreational activities, such stops are not guaranteed. The actual routing of the vessel may vary from that advertised depending on time allowances and freight opportunity.

**** Rates in Canadian Dollars are per person, based on double occupancy + 5% Goods & Services Tax and include:**

All meals, wine with dinner, non-alcoholic beverages and snacks

Single occupancy is available on a limited basis at an **additional charge of 70%** of the double occupancy rate
Deposits (Non-Refundable) 25% deposit is due upon booking. The balance is payable no later than 60 days prior to sailing date
 Standard Stateroom – bunk beds, rear/side viewing windows, smaller stateroom
 Premium Stateroom – twin beds, forward viewing windows, larger stateroom

Please Note:

Passengers must be **16 years or older**. Interior of vessel is **non-smoking**. Sorry, we are unable to accommodate pets.
 All Aurora Explorer cruises begin and end at Campbell River Marine Terminal in Menzies Bay, 15 kms north of Campbell River, BC. Secure, free parking is available on site.

Short Notice Savings

Please inquire about our standby waiting list. In some circumstances, special discounts of up to 25% off regular fares may apply for short-notice, standby passengers.

Group Booking Discount

Discount group rates for booking of 8 persons or more are available. Please inquire.

Refund Policy

25% deposit at time of booking is non-refundable
 Upon receipt of your full fare at least 60 days prior to your cruise the refund schedule is as follows:
 75% refund is provided if cancellation occurs 60 days or more prior to sailing
 50% refund is provided if cancellation occurs 45 to 59 days prior to sailing
 25% refund is provided if cancellation occurs 30 to 44 days prior to sailing
No refund is provided if cancellation occurs with less than 30 days notice

For more information: **Phone (250) 286-3347**

VISIT OUR WEBSITE AT: www.marinelinktours.com